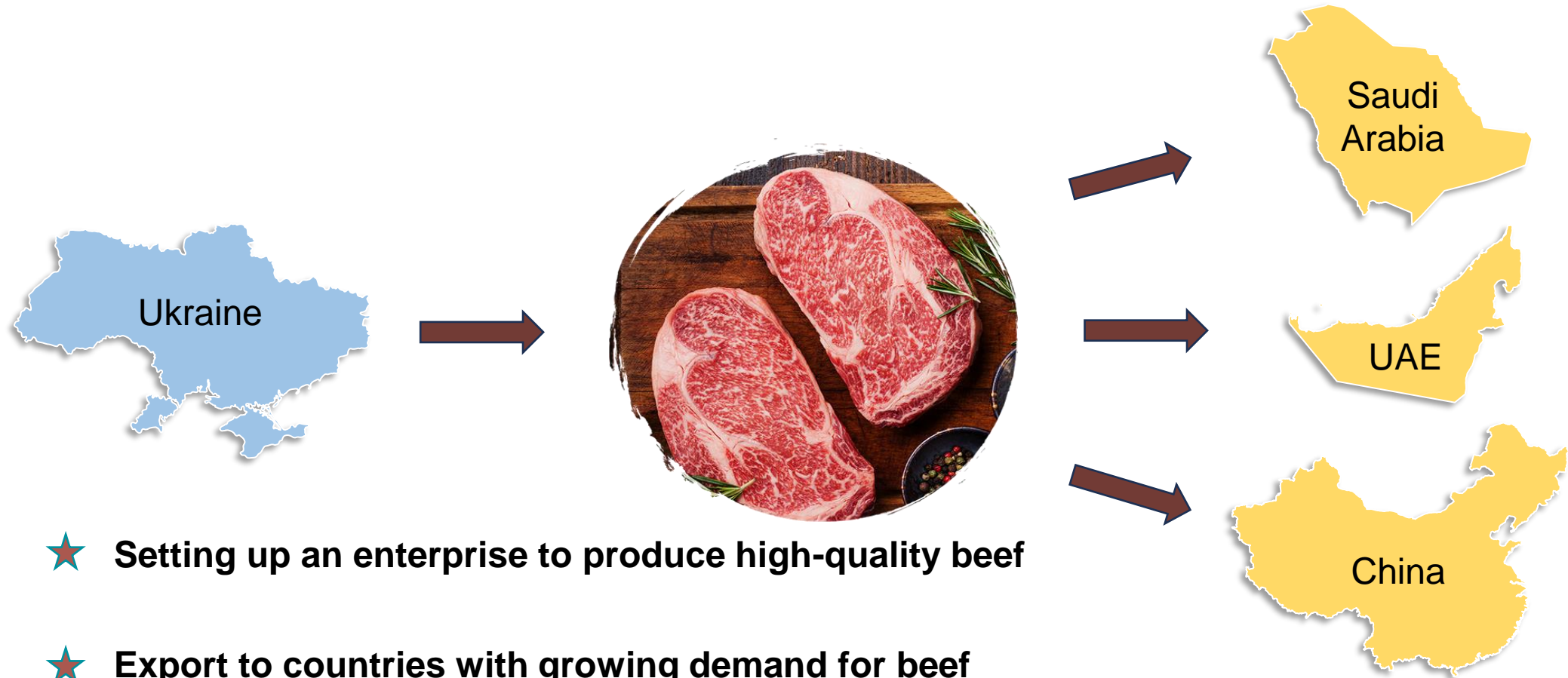


BEEF PROCESSING PLANT

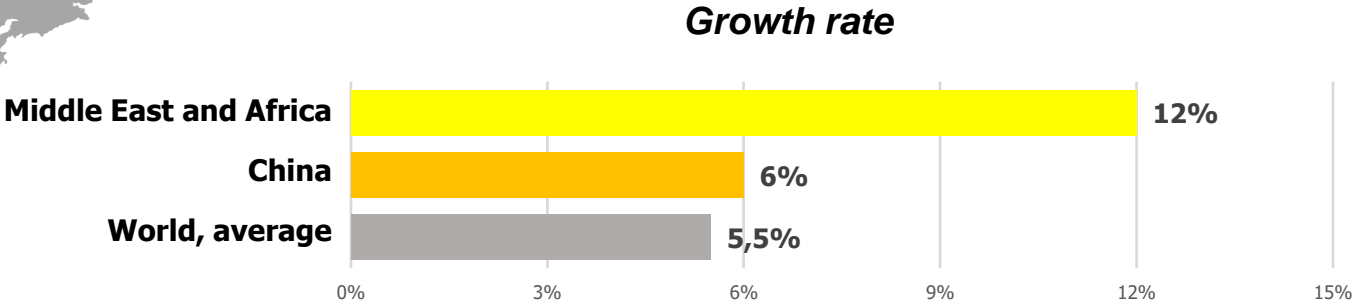
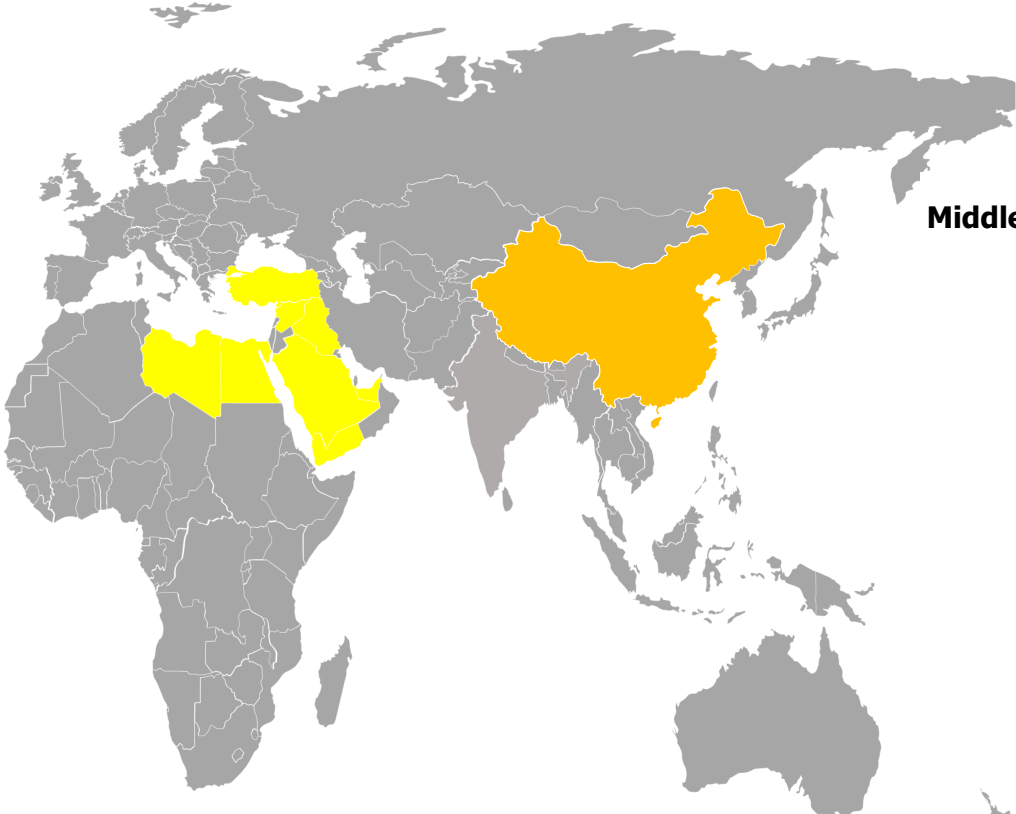


Business idea



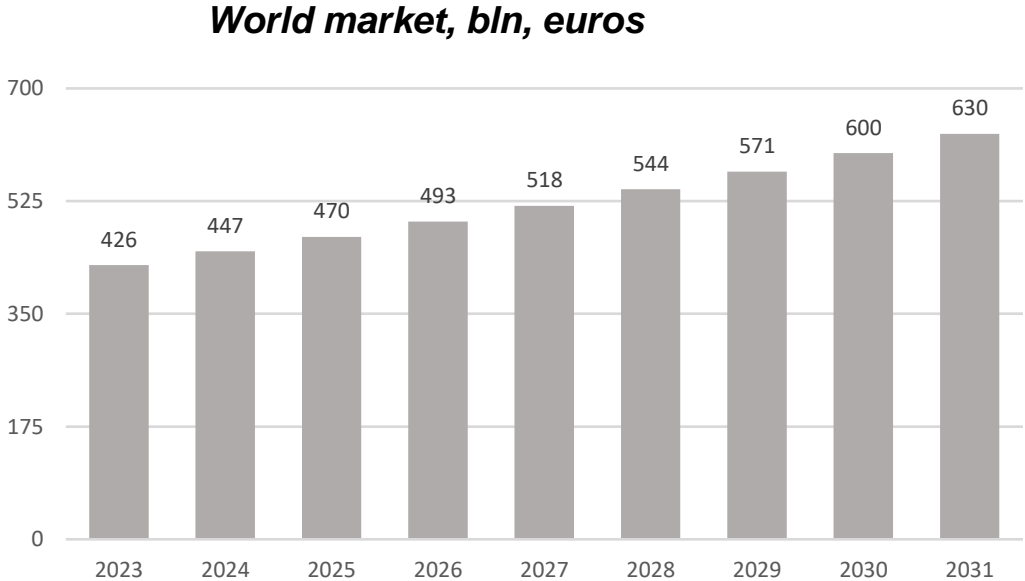
- ★ **Setting up an enterprise to produce high-quality beef**
- ★ **Export to countries with growing demand for beef**
- ★ **We have a potential buyer in the UAE**

Market overview



By the end of 2031, volume of the world beef and veal market shall increase to 650 billion dollars at an annual growth rate of 4.5-5.5%. Research shows strong correlation between meat consumption and household income. Therefore, this growth will occur unevenly across the world.

The Middle East and Asia regions will be the key drivers, with the 6% annual growth in China as the main player, and up to 12% for some countries in the Middle East and Africa.



INVESTMENT



Total project cost

€5,938,473

Project is to be financed by means of loan funds (**€5,588,323**) and own funds, which have been used for the land plot purchase (**€350,000**)

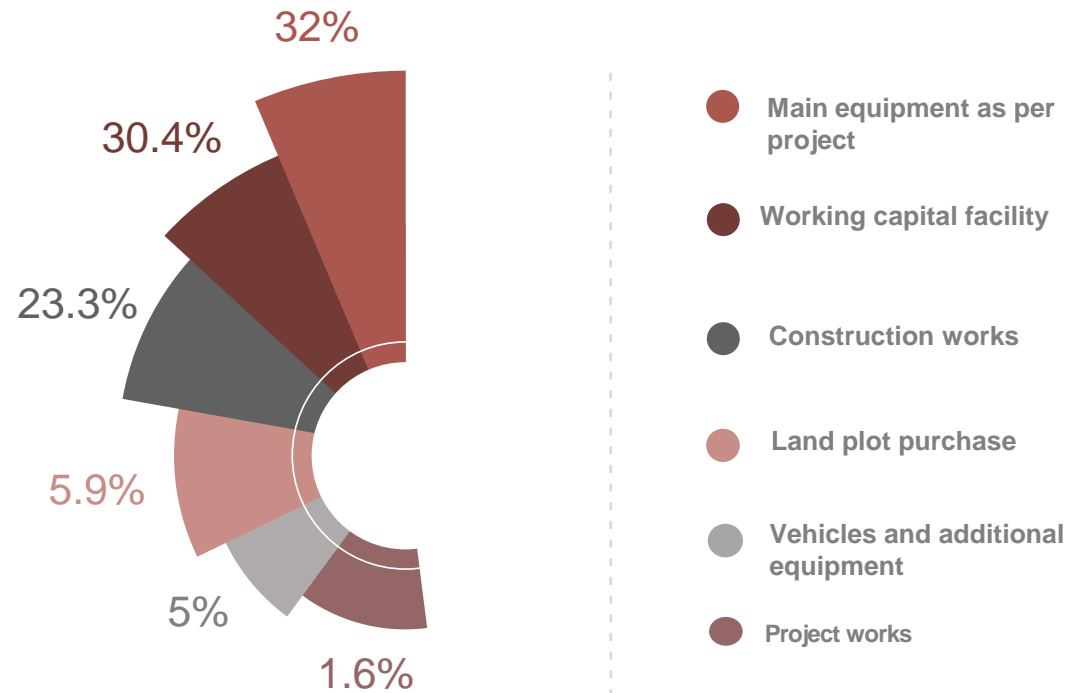
Project financing

Loan

95.1%

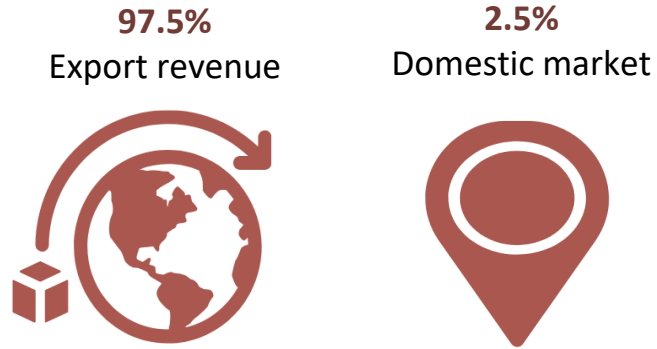
Equity

5.9%

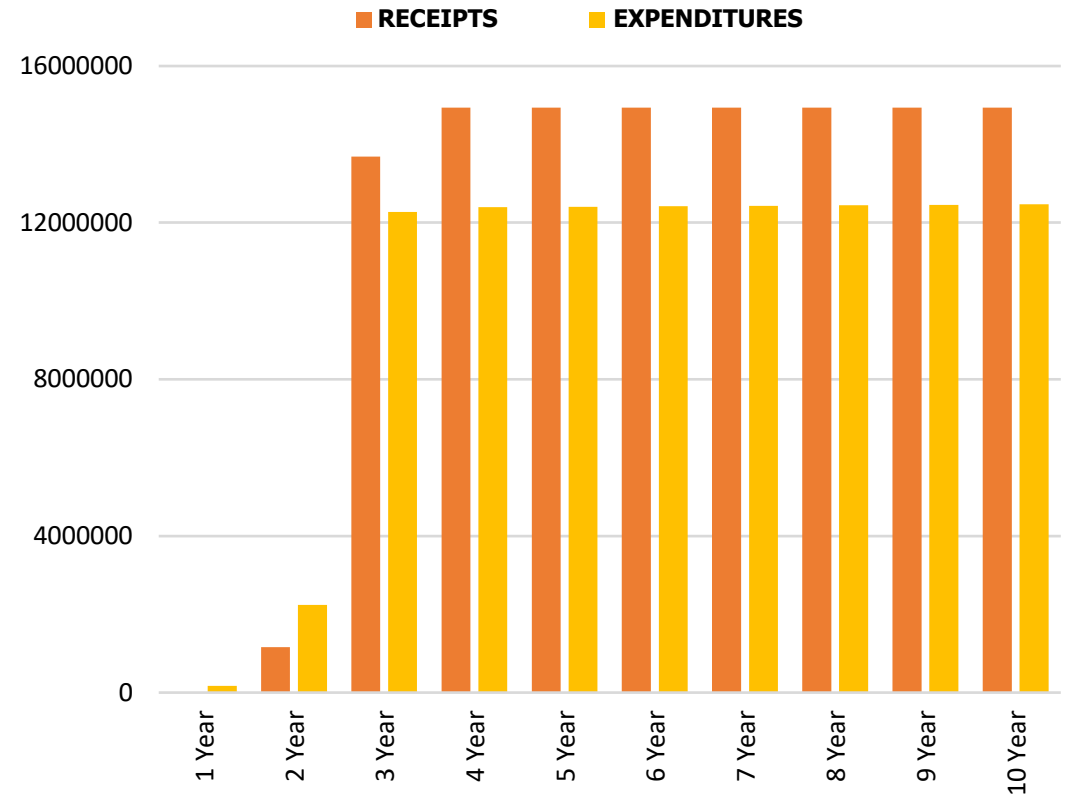
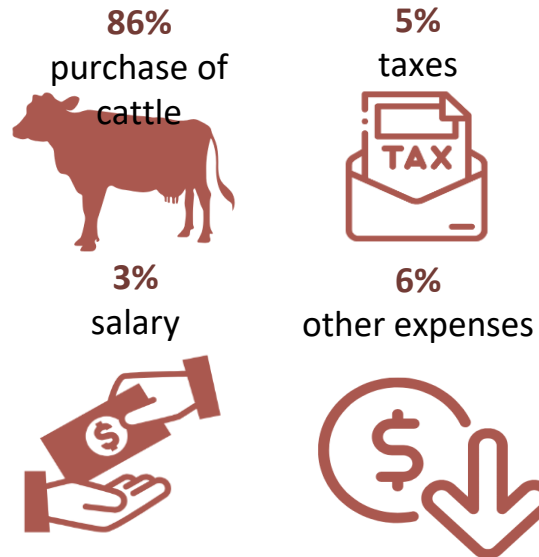


Revenue and expenses profile (10 years)

Revenue

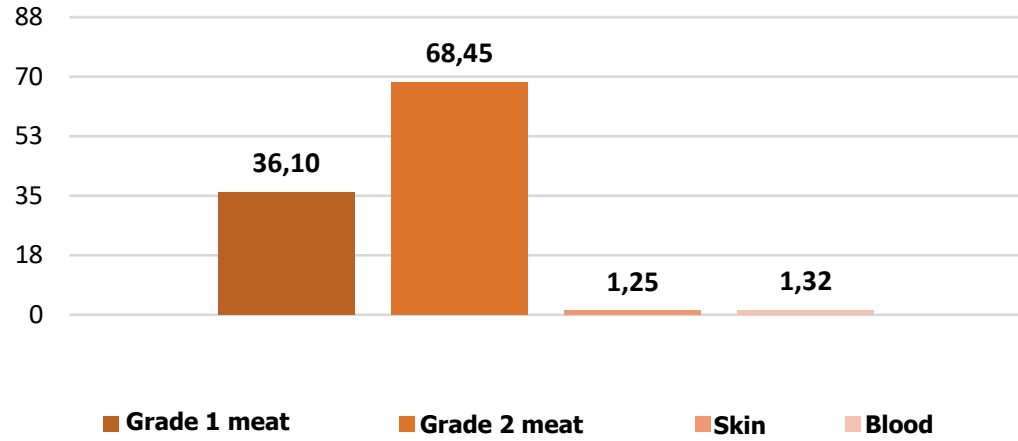


Costs

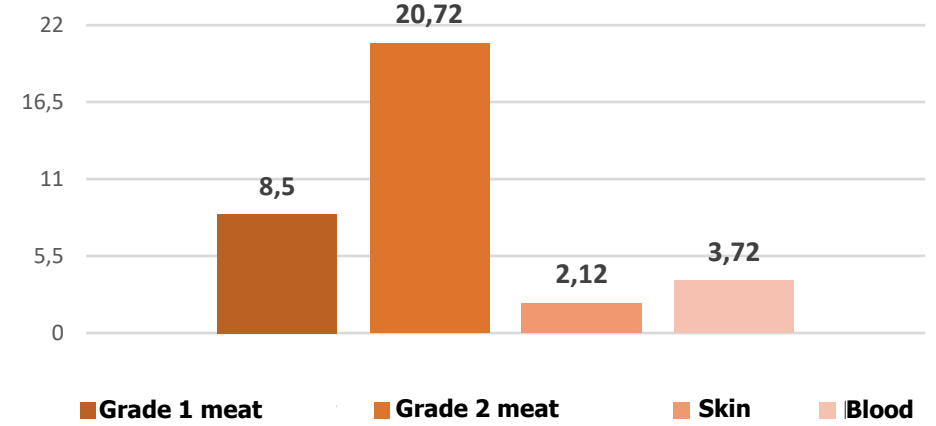


Sales

Sales, mln, euros



Sales, mln, kg



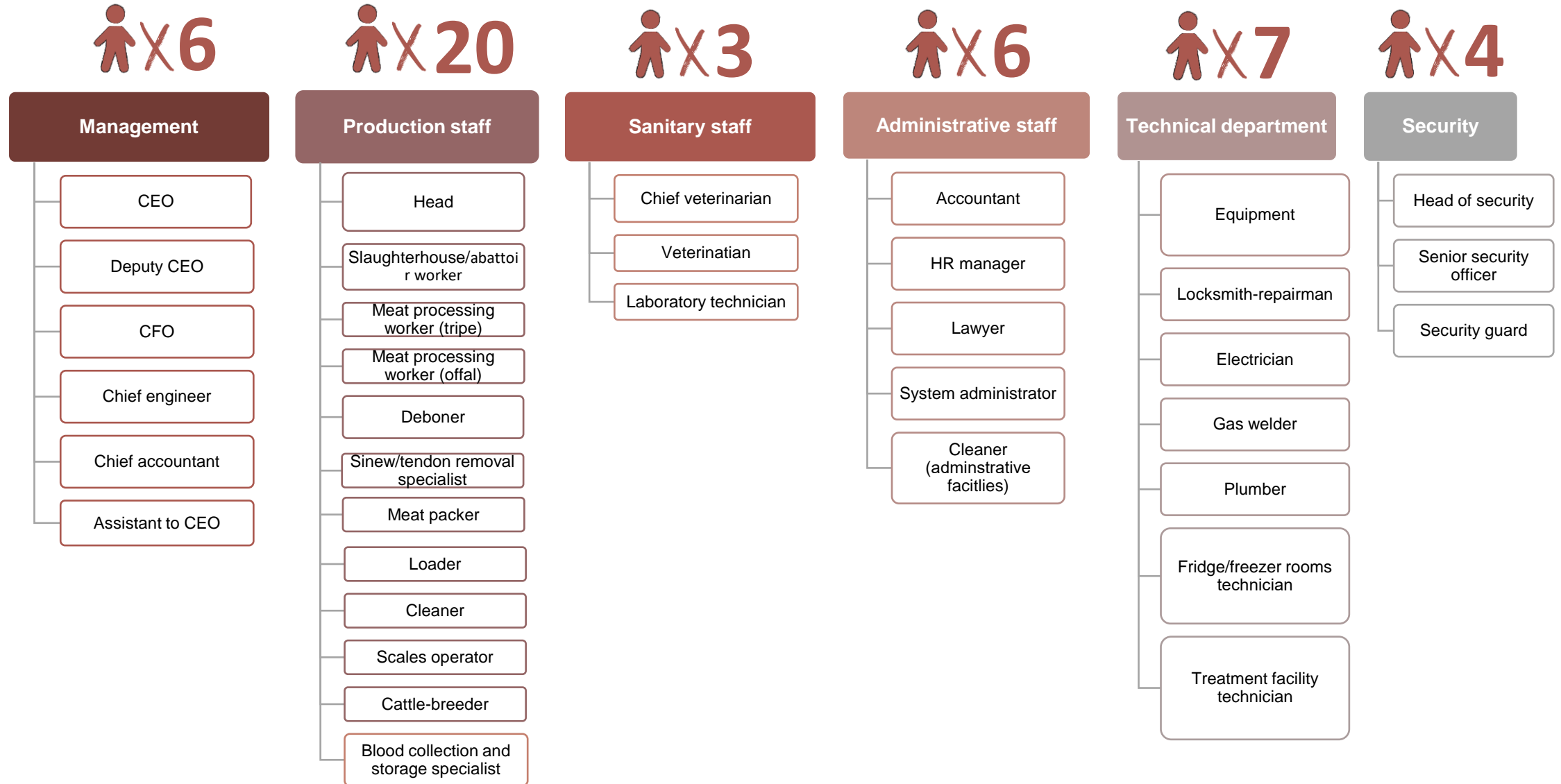
97.5 %
Export



84.4 %
Export

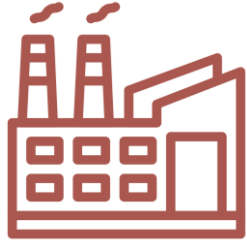


Staff

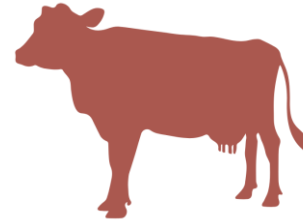


Meat output and value

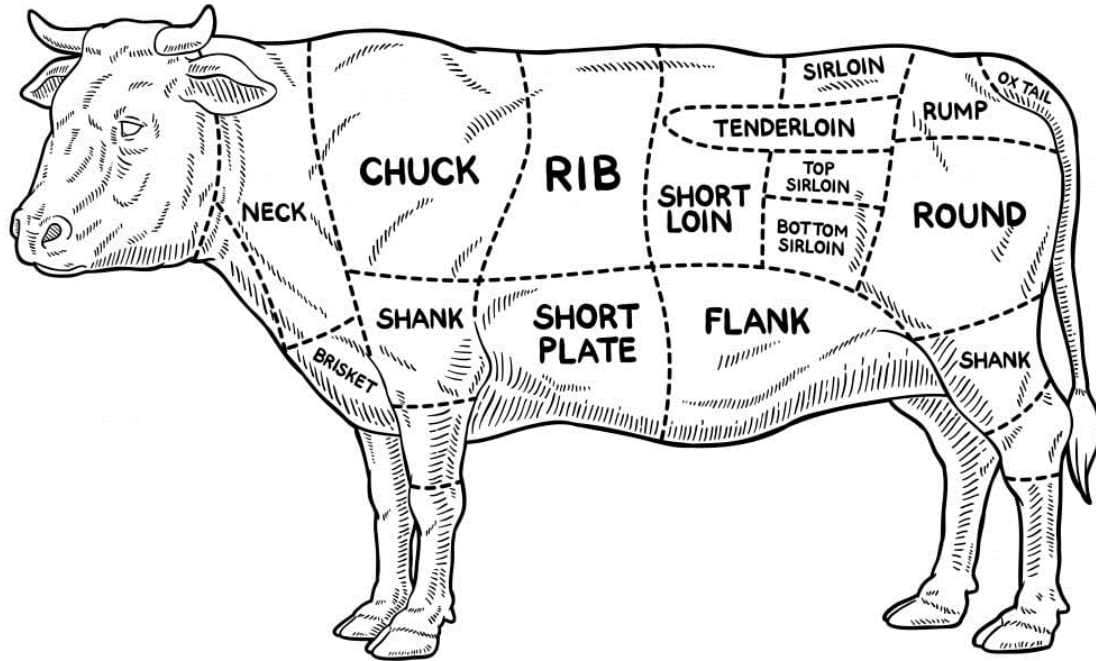
97%
Production rate



56 heads
per shift



303 tons of
meat per month

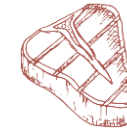


Euro/kg

Of live
weight

€4.25

16%



Grade 1 meat: sirloin, tenderloin, short loin, brisket, rib, round

€3.30

39%



Grade 2 meat: neck, shoulder, chuck, shank, scrag

€0.59

7%



Blood

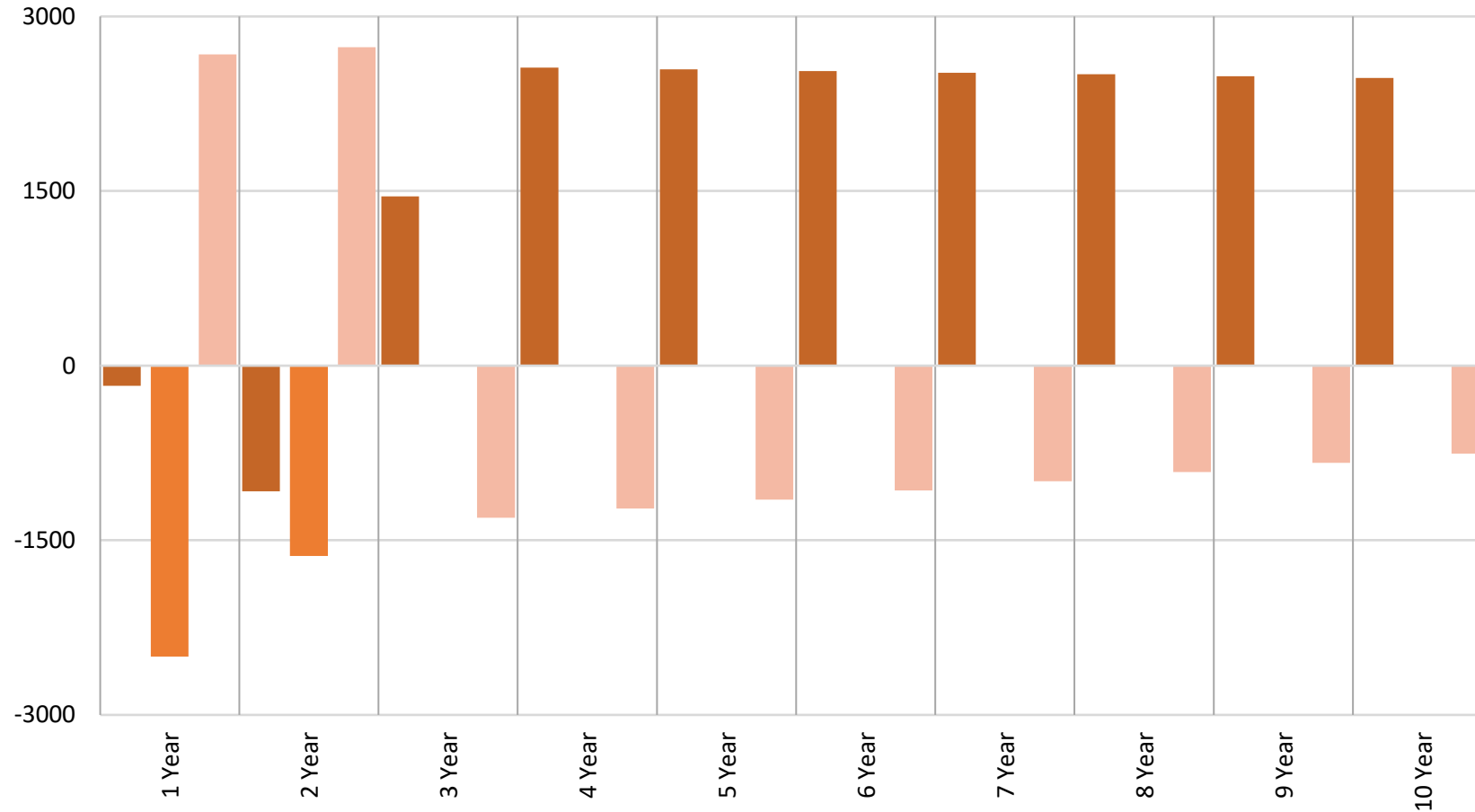
€0.35

4%



Skin

CASH FLOW, THOUSAND, EUROS



Accumulated aggregate cash at
the end of Year 10
€ 10,828 thousand euros

- Cash flow from operating activities
- Cash flow from investment activities
- Cash flow from financial activities

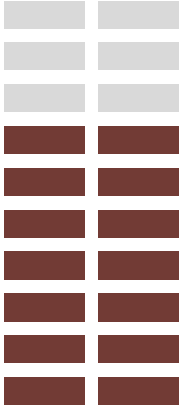
Total: € 17,806 thousands euro

Total: - € 4,135 thousands euro

Total: - € 2,782 thousands euro

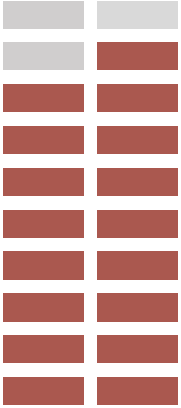
PROJECT INVESTMENT ATTRACTIVENESS

Project NPV is positive indicating feasibility of the project implementation



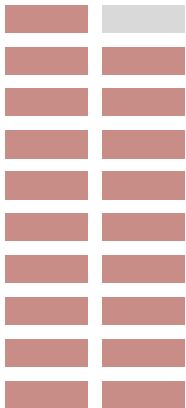
22.8%

Internal rate of return – IRR



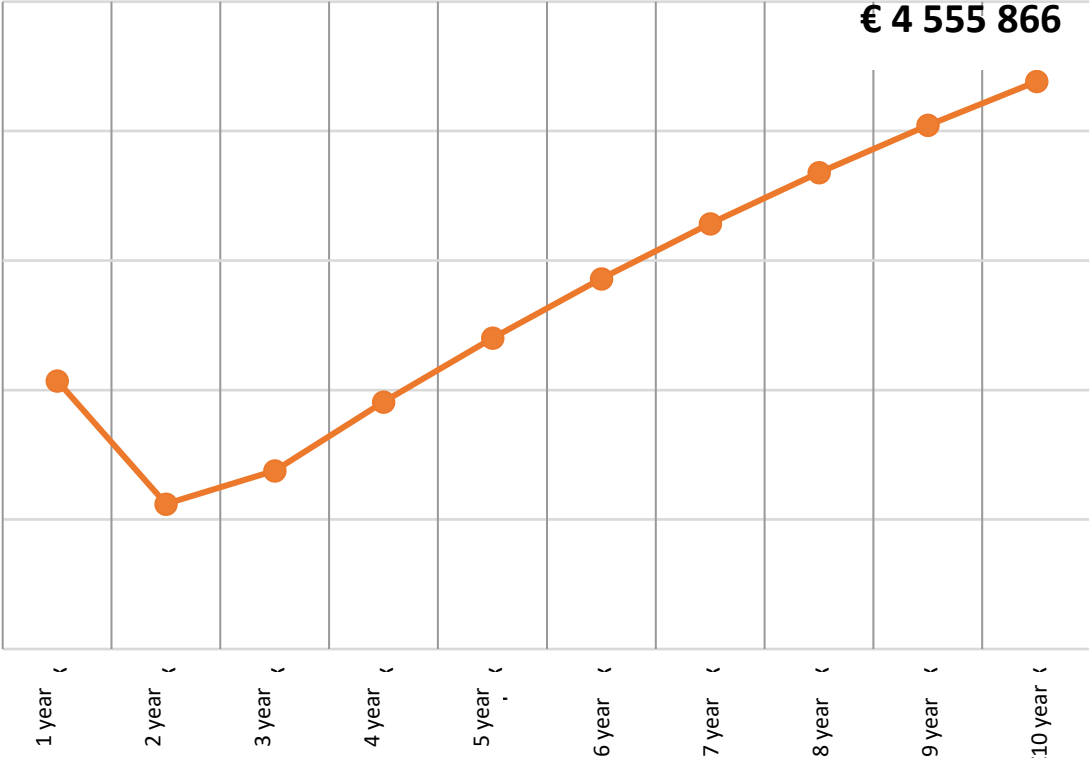
2.73

Profitability index – PI



2.5

Return on investment – ROI



Discounted payback period
6 years 4 mons

Calculation period – **10 years**

Discount rate – **8,6 %**

LOAN SERVICING

Loan amount

€ 5,588,473

Loan rate

11.0%

Loan term

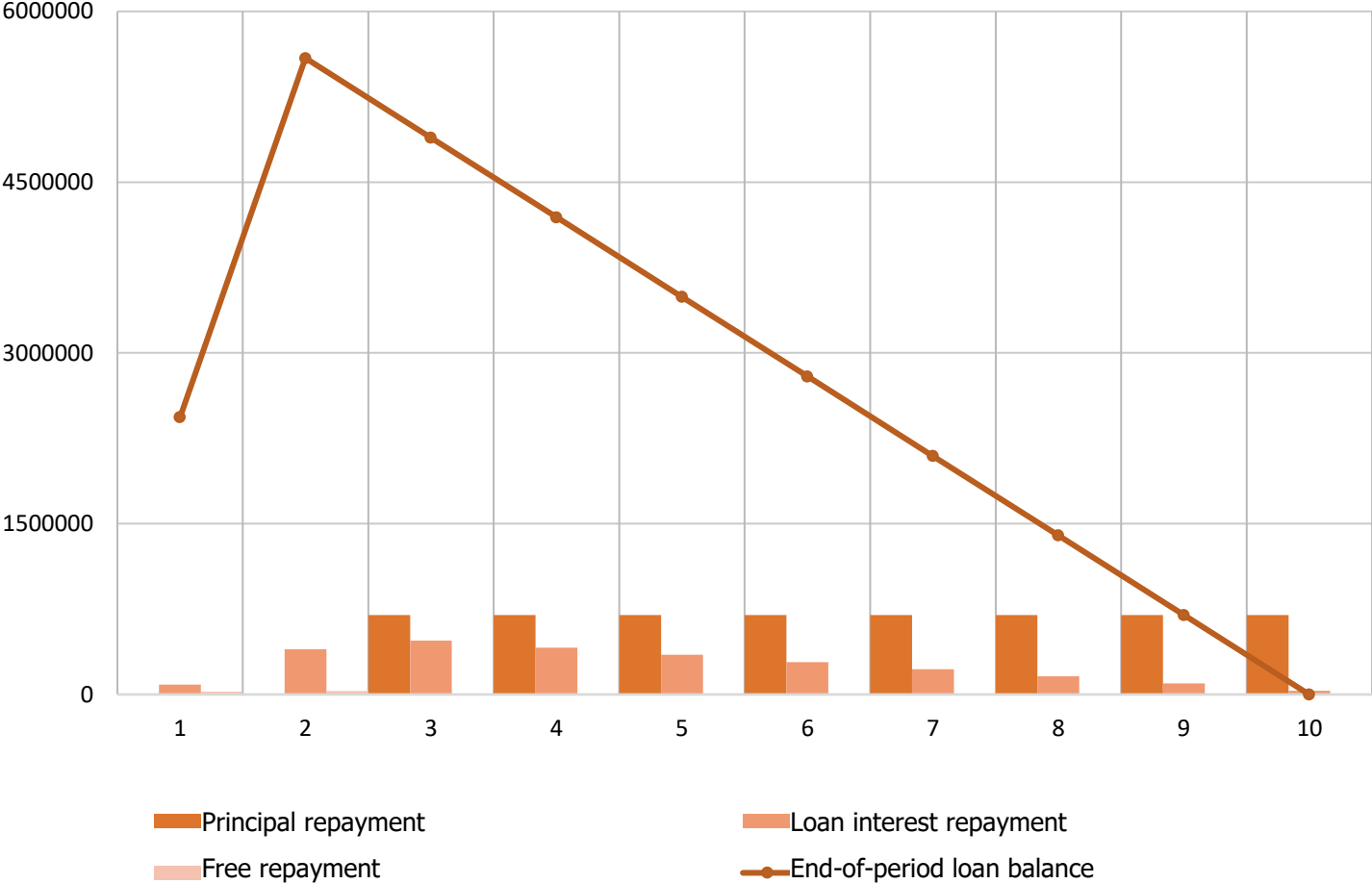
10 years

Grace period

2 years

Monthly payment

€58,213



Project team



Vitaliy Gulenko

Education:

- Bachelor of Economics
- Bachelor of Law

Experience :



- **25+ yrs** – State Tax Service of Ukraine and other finance/economics institutions



- **5+ yrs** – successful management of a food supply company, operating on national and foreign markets

Project role: project coordinator, CEO, expansion of sales markets and strategic decision-making



Kostiantyn Ahoshkov

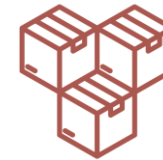
Education:

Accounting and Auditing degree, Odesa State University of Economics

Experience :



- **12+ yrs** – State Tax Service of Ukraine



- **8+ yrs** – commercial director of one of the largest retail chains in Ukraine

Position and functions after project launch: CFO; attainment of planned financial indicators